

## Manage Your Projector Set-Up, Simply, Quickly and Perfectly.

By applying the Auto Screen Adjustment function to Geometry Manager Pro software, you can greatly save installation time and costs. You can also set up multiple projectors automatically and simultaneously.



### Before

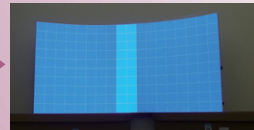


Several professional techniques were required for multi-unit projection, it is time consuming to achieve a high-quality visual performance.

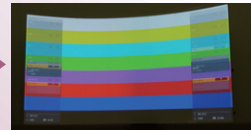
- Geometric adjustment
- Stacking



- Edge blending
- Black level adjustment



- Color matching
- Brightness adjustment



Adjustment finished.



### After

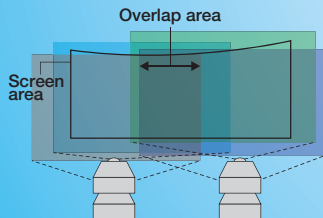


Beautiful projection takes 3 quick, easy steps. Auto Screen Adjustment almost completes the installation of multiple projectors by itself.

#### Step 1

##### Projector set-up

Adjust the lens zoom/shift/focus to cover the whole screen area.

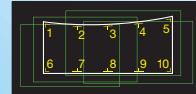


#### Step 2

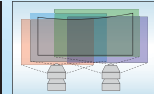
##### Camera and screen set-up

Set the camera to cover the screen area and select multiple points on the edge of the screen by PC.

On the screen



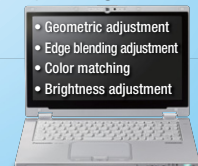
Camera finder



#### Step 3

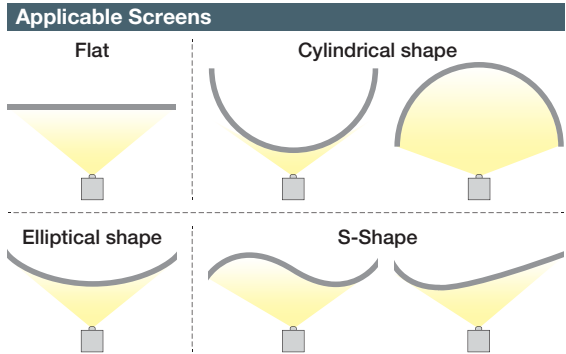
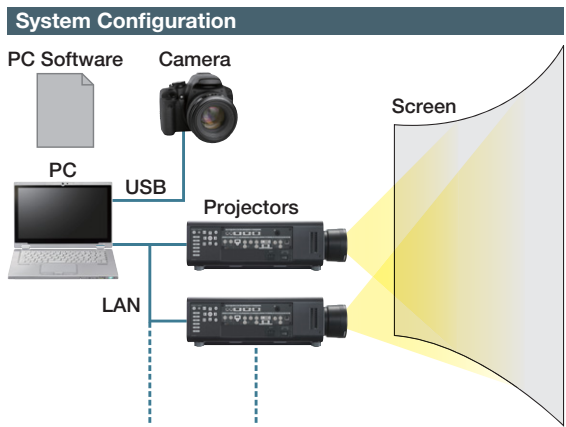
##### Auto adjustment

Automatically calibrate correction value and reflect the suitable adjustment to each projectors via Geometry Manager Pro software.



Specifications	
	<b>Auto Screen Adjustment Upgrade Kit (ET-CUK10)</b> <b>Auto Screen Adjustment Upgrade Kit for PC (ET-CUK10P)</b>
<b>Supported Projectors</b>	PT-RQ32K/RZ31K/RS30K/RZ21K/RS20K/RQ13K/RZ12K/RS11K/DZ21K2/DS20K2/DZ13K/DS12K/DZ10K/RZ970/RZ770/RZ660/RZ670/DZ870/DZ780
<b>Connection</b>	LAN
<b>Number of Projectors</b>	Max 99 units (Horizontal 4 units x Vertical 4 units x Stacking 6 units per 1 camera, Max 6 cameras)
<b>Key Functions</b>	Automatically adjust Geometry, Edge Blending, Curved Screen, Stacking, Color & Brightness, Black level, White Balance
<b>Requirement</b>	Geometry Manager Pro Software Ver.3.3 or later Projector's Firmware version PT-DZ21K/DS20K: ver.4.0 or later PT-DZ13K/DS12K/DZ870: ver.3.0 or later
<b>Cameras and Lenses</b>	D5200/D5300/D5500 (Nikon)*1 w/ Normal Zoom: AF-S DX NIKKOR 18-55mm f/3.5-5.6G VR Wide-angle Zoom: AF-S DX NIKKOR 10-24mm f/3.5-4.5G ED High-power Zoom: AF-S DX NIKKOR 18-140mm f/3.5-5.6G ED VR Normal Zoom: AF-S DX NIKKOR 18-55mm f/3.5-5.6G VR II *2 Normal Zoom: AF-P DX NIKKOR 18-55mm f/3.5-5.6G VR *3
<b>Activation Method</b>	Get the Activation Pass-code through 'PASS' System [ET-CUK10] One Pass-code per projector [ET-CUK10P] One Pass-code per PC

\*1 The latest compatible camera and lens list is in PASS system.  
\*2 The camera "C" firmware version 1.01 or newer must be applied on D5300/D5500.  
\*3 The Optical VR option in the camera menu should be turned off on D5300/D5500.



## Geometry Manager Pro Software

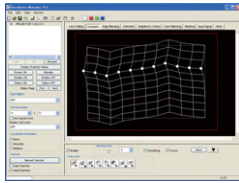
### Maximize the projector's performance with Geometry Manager Pro

You can make the projector more flexible by upgrading the software. Combining the ET-CUK10 Auto Screen Adjustment upgrade kit lets you maximize the projector's performance by minimizing set-up time and costs.

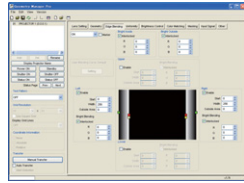
#### Geometry Manager Pro Software

Free Software downloadable from PASS system

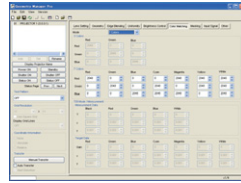
##### Geometry



##### Edge blending



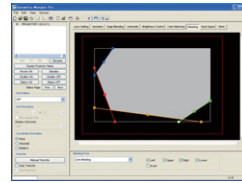
##### Color matching



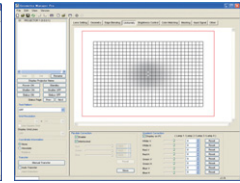
#### Upgrade Kit for Geometry Manager Pro (ET-UK20)

More Flexible & Functional  
Activate through PASS system

##### Masking



##### Uniformity



	Geometry Manager Pro software	Upgrade Kit (ET-UK20)
<b>Supported Projectors</b>	PT-RQ32K/RZ31K/RS30K/RZ21K/RS20K/RQ13K/RZ12K/RS11K/DZ21K2/DS20K2/DZ13K/DS12K/DZ10K/RZ970/RZ770/RZ660/RZ670/DZ870/DZ780	PT-RQ32K/RZ31K/RS30K/RZ21K/RS20K/RQ13K/RZ12K/RS11K/DZ21K2/DS20K2/DZ13K/DS12K/RZ970/RZ770/RZ660/RZ670/DZ870/DZ780
<b>Connection</b>	LAN/RS232C	
<b>OS</b>	Windows7/8.1/10	
<b>Number of Projectors</b>	32 sets (ver.1.xx) /64 sets (ver.2.0 or later)	
<b>Requirement</b>	—	Geometry Manager Pro software
<b>Key functions</b>	Geometric Adjustment, Edge Blending, Color Matching	Geometric Adjustment (including Rotation and Flip), Edge Blending, Color Matching, Masking, Uniformity Control
<b>Activation Method</b>	—	Get the Activation Pass-code through 'PASS' System One Pass-code per projector



PASS Web Site – <https://panasonic.net/cns/projector/pass>  
\* For more details on the latest projector and software information, please visit the above website.

### Register your projector to activate the upgrade kit and get what you need.

Panasonic continuously includes the latest features. Once you have registered the projector and activated the upgrade kit via the PASS system, you can enjoy all the functions of Panasonic professional projectors.

**Panasonic**



Specifications and appearance are subject to change without notice.  
Product availability differs depending on region and country.  
This product may be subject to export control regulations.  
Windows® are either registered trademarks or trademarks of Microsoft Corporation in the United States and/or other countries.  
All trademarks are the property of their respective trademark owners.  
© 2018 Panasonic Corporation. All rights reserved.

For more information about Panasonic projectors, please visit:  
Projector Global Web Site – <https://panasonic.net/cns/projector>  
Facebook – [www.facebook.com/panasonicprojector](https://www.facebook.com/panasonicprojector)  
YouTube – [www.youtube.com/user/PanasonicProjector](https://www.youtube.com/user/PanasonicProjector)

All information included here is valid as of January 2018.

ET-CUK10G3 Printed in Japan.