

KAIROS

Achieving Innovation in Live Video Video Production Platform KAIROS Mainframes Kairos Core 200/2000



Four Models Lineup to Suit the Operating Environment

Middle-range class: Kairos Core 200 (AT-KC200, AT-KC200L1); High-end class: Kairos Core 2000 (AT-KC2000, AT-KC2000S1); users can select a model suitable for their operating environment according to the number of IP/SDI inputs and outputs and storage capacity.

Flexible and Diverse Video Production

Using the GPU for video processing enables multilayer video production with no limit on the number of MEs or keys. What's more, the "Canvas" screen frees video production from resolution and format limits.

Supports Diverse I/O Signals and Multiple Channels

Kairos Core 200/2000 supports a variety of input and output signals, including SDI*1, ST 2110, NDI® High Bandwidth, and SRT. Its also support ST 2022-7 redundancy, which duplicates the network for operational reliability. Redundancy without halving the number of inputs; the AT-KC2000S1 also does not halve both of inputs and outputs.*1 Furthermore, Smart Routing Inputs*2 allow the input sources of external routers to be deployed and operated as virtual inputs on KAIROS, enabling operation beyond the maximum number of inputs.

*1: Requires Kairos Software Version 1.6 or later. *2: Requires Kairos Software Version 1.7 (to be released in FY2024 Q2) or later.
• NDI® is a registered trademark of Vizrt NDI AB in the United States and other countries.

AT-KC200
AT-KC200L1
Kairos Core 200
(Main Frame)



AT-KC2000
AT-KC2000S1
Kairos Core 2000
(Main Frame)



Next Gen KAIROS for Extra-innovative Live-video Production

New Midrange KAIROS with Increased Functionality and Performance

AT-KC200/KC200L1
Kairos Core 200
(Main Frame)



High-end KAIROS for Next-gen Live-video Production Featuring Unmatched Performance Like Never Before

AT-KC2000/KC2000S1
Kairos Core 2000
(Main Frame)



Diverse and Flexible Inputs/Outputs

All 4 models: Agile I/O Routing for flexible allocation of IP input and output according to bandwidth, and Smart Routing*1 that allows virtual deployment of input sources to external routers on KAIROS.
AT-KC2000S1: The number of IP inputs is double that of the AT-KC200/KC2000. And even during redundancy operation, the number of inputs and outputs is not halved. *2
AT-KC200L1: SDI inputs/outputs and NDI® and SRT as standard. *3

Much More Internal Storage

AT-KC200: 1.3x more for the RAM player, 5x more for the clip player, and 9x more for still images (vs. AT-KC100)
AT-KC2000: 1.5x more for the RAM player, over 4x more for the clip player, and over 2x more for still images (vs. AT-KC1000)

Improved Reliability and Operability

The new chassis' low-speed fans combine quiet operation with high throughput.
ST 2022-7 network redundancy ensures improved reliability in the event of a network failure, and redundancy is possible without halving the number of inputs. Furthermore, the AT-KC2000S1 has no halving of both the number of inputs and outputs.

Major Specifications

Model Number	AT-KC200L1	AT-KC200	AT-KC2000	AT-KC2000S1
Power Requirement	AC100-127V/200-240V, 50/60Hz, 10A/5A, Redundant			
Weight	Approx. 17.8 kg / 39.24 lb without accessories & options	Approx. 17 kg / 37.47 lb without accessories & options		
Dimensions (W x H x D)	430 mm x 176 mm x 505 mm / 16-15/16" x 6-15/16" x 19-7/8" (4RU)			
Agile Input Routing	Yes *3			Yes
Smart Routing Input	Yes *1*3			Yes*1
HD 1.5G I/O	64 in x 40 out *3			64 in x 40 out *2
HD 3G I/O	32 in x 40 out *3	32 in x 40 out *2		64 in x 40 out *2
4K 12G I/O	8 in x 10 out *3	8 in x 10 out *2		16 in x 10 out *2
ST 2022-7 Redundancy	Yes, Inputs not halved Outputs halved *3	Yes, Inputs not halved Outputs halved *2		Yes, Inputs/outputs not halved *2
NDI®*4 (HD only)	2 in/2 out, Audio 16 ch	2 in/2 out, Audio 16 ch		
SDI	24 in x 12 out of HD/FHD 12 in x 6 out of 4K	Supported with optional AT-KC20M1 SDI I/O Board*2		
RTP/SRT/RTMP/RTSP	8 in/2 out (only input for RTSP)		16 in/4 out (only input for RTSP)	
RossTalk/NMOS/TSL5.0/AMP	Yes (Only NMOS future supports*3) *5		Yes *5	
RAM Player (uncompressed)	8 ch, 32 GB	8 ch, 32 GB *6	8 ch, 96 GB *6	8 ch, 86 GB *6
Clip Player (compressed)	2 ch, 400 GB		2 ch, 850 GB	
Still Store	up to 4K, 7 GB		up to 4K, 32 GB	
Audio Player (compressed)	4 ch, 400 GB *7		4 ch, 850 GB *7	
Multiviewer	4 ch, Max. 36 PiP			
CANVAS Function	up to 8K, 32 Megapixels		up to 12K, 66 Megapixels	
PTP Sync Support	Yes			

*1: Requires software Version 1.7 or later. AT-KC200L1 will support this in the future.

*2: Requires software Version 1.6 or later.

*3: ST 2110 input/output requires a separate option to be supported in the future.

*4: NDI® here means NDI® High bandwidth.

*5: RossTalk and NMOS each require an optional software key.

*6: Max. RAM capacity is reduced with SDI I/O boards installed.

For details, please check SDI I/O board web page.

*7: Share capacity with clip player.

• NDI® is a registered trademark of Vizrt NDI AB in the United States and other countries.

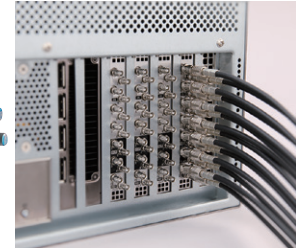
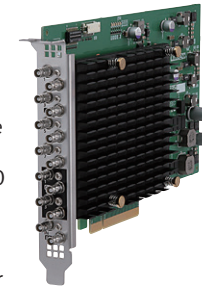
New Options to Expand the KAIROS System

Optional Hardware

AT-KC20M1
SDI I/O Board

SDI (micro BNC) input/output is possible by installing the SDI I/O Board in a slot on the back of the Kairos Core 200/2000 mainframe, enabling 8 inputs/4 outputs and REF In/Out on a single board.
One to four cards can be installed in a single Kairos Core to expand the number of SDI inputs and outputs.

- Compatible models: AT-KC200/KC2000/KC2000S1 (software ver. 1.6 or later), AT-KC200L1.
Installation on the main frame is carried out by the dealer. Always consult your dealer for installation.
- * When installed, max. capacity of the RAM player is reduced. For details, please check our website.



Example of installation on AT-KC200

SDI Inputs and Outputs of Kairos Core 200/2000

	AT-KC200L1	AT-KC200	AT-KC2000	AT-KC2000S1
Maximum SDI boards mount	1 unit *	Max. 4 units		Max. 2 units
HD/FHD Maximum I/O	32 in x 16 out		16 in x 8 out	
4K Maximum I/O	16 in x 8 out		8 in x 4 out	

The AT-KC200L1 supports SDI input/output as standard, but one additional SDI I/O board can be installed.

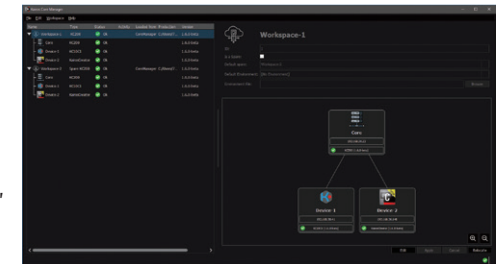
Optional Software

AT-SFCM10
Kairos Core Manager

This optional software, which runs on a PC networked to KAIROS, enables intuitive GUI-based operation for backup, media synchronization, data transfer, etc. using multiple Kairos Core units.

- Compatible models: AT-KC200/KC2000/KC2000S1 (software ver. 1.6.2 or later), AT-KC200L1.
- Operating system requirements: Windows 10 or 11.

*Kairos Core Manager is free for use with up to two Kairos Core units; a licence must be purchased for use with three or more units. Please consult your dealer.



AT-SFCM10 Kairos Core Manager operation screen

Panasonic Entertainment & Communication Co., Ltd.

1-10-12 Yagumo-higashi-machi, Moriguchi City, Osaka 570-0021, Japan

Specifications are subject to change without notice.

SP-C-KC2000ENZ1



For more information, please visit Panasonic web site <https://pro-av.panasonic.net/en/qr/>